



Document Title	Document Description	Version No.
<b>112-27-016</b>	<b>ISED Electrical Diagram</b>	<b>0</b>

## **1. Purpose**

This document is used as a reference for all assemblers and service technicians of the iSED<sup>®</sup> analyzer. This document contains diagrams that identify all currently used connectors for attaching peripherals and modules needed for iSED<sup>®</sup> function.

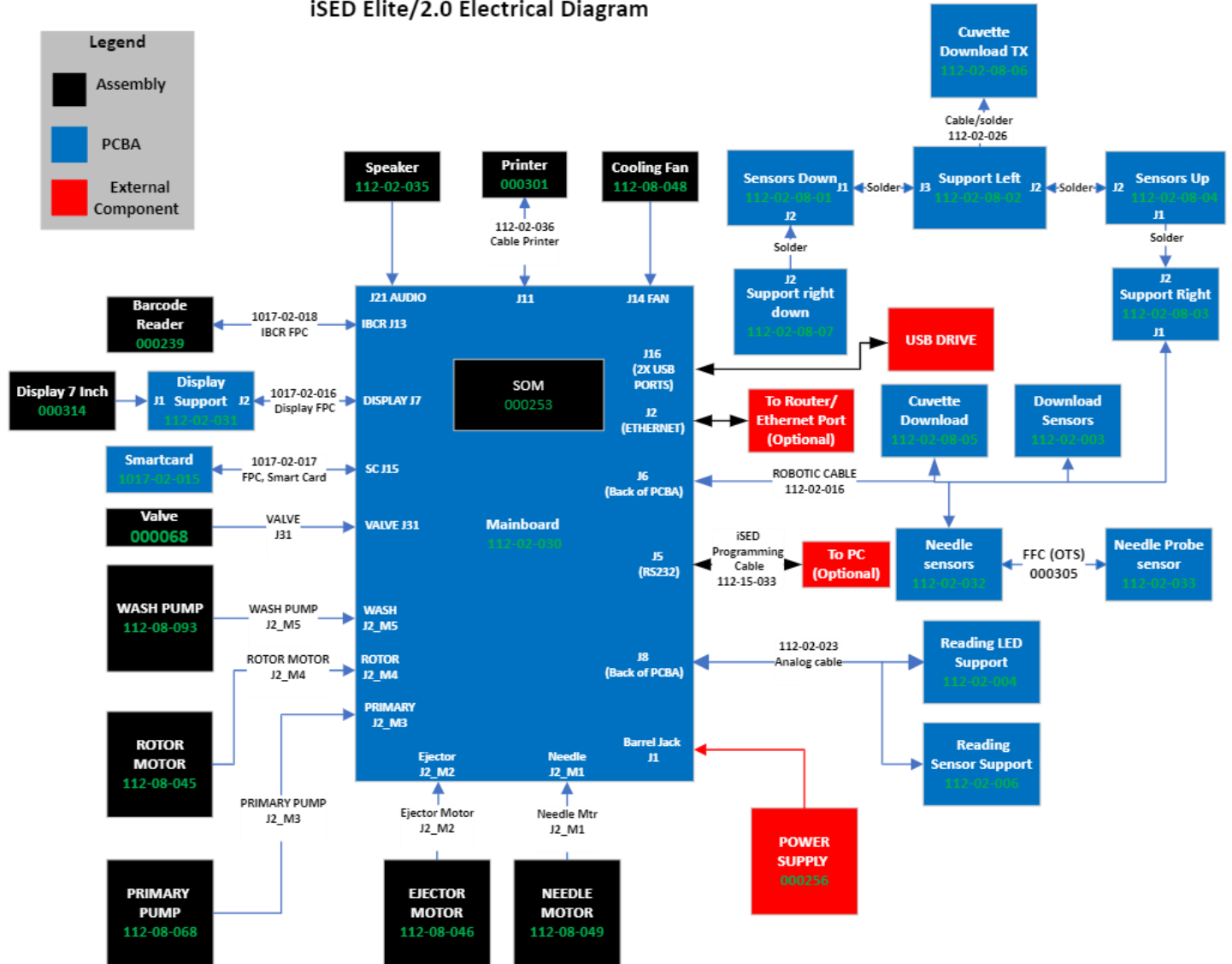
## **2. Scope**

This document will be used as a reference for the iSED<sup>®</sup> Device History Record (112-27-010) and iSED<sup>®</sup> Service Report (112-28-002).

Document Title	Document Description	Version No.
112-27-016	ISED Electrical Diagram	0

### 3. Electrical Diagram

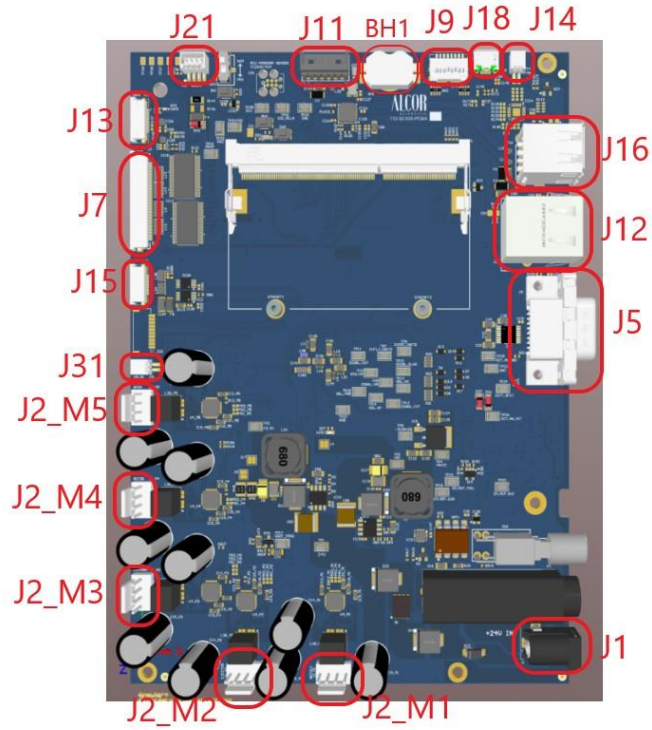
ISED Elite/2.0 Electrical Diagram



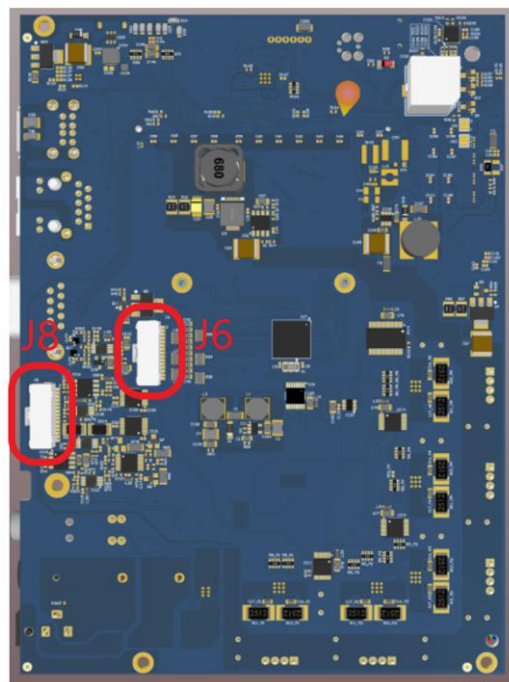
Document Title	Document Description	Version No.
112-27-016	ISED Electrical Diagram	0

3.1. Mainboard PCBA 112-02-030

**Top**



**Bottom**



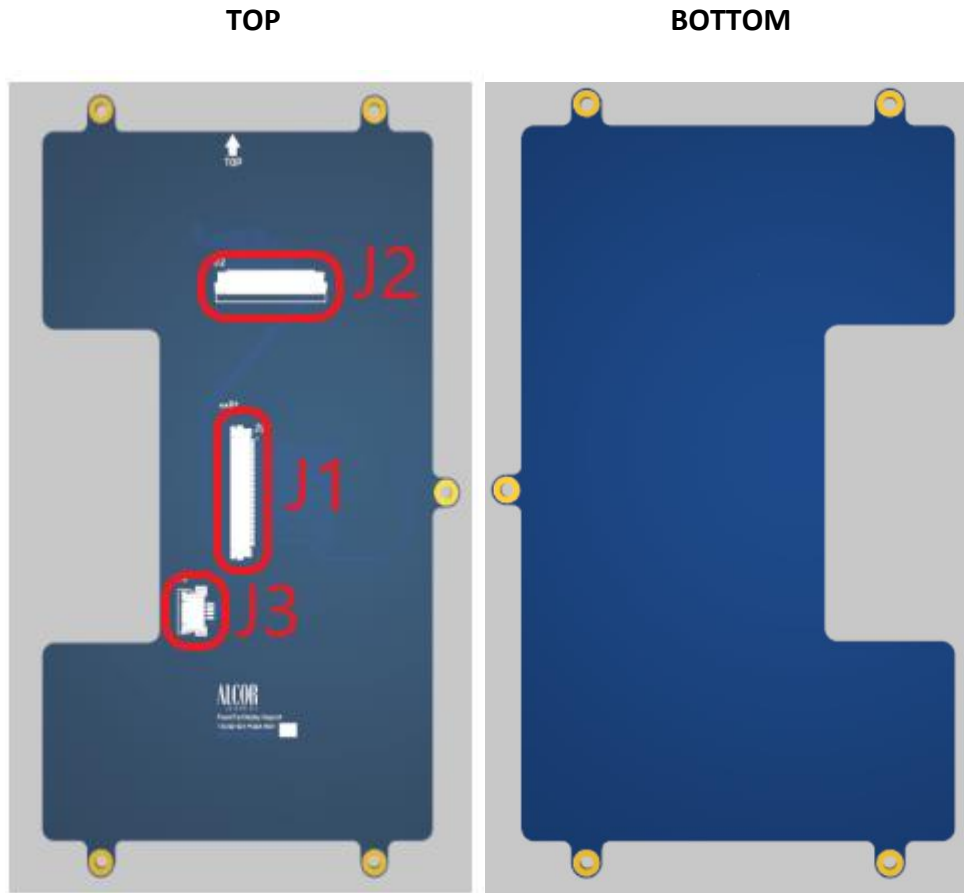


Document Title	Document Description	Version No.
<b>112-27-016</b>	<b>ISED Electrical Diagram</b>	<b>0</b>

Connector	Description	Connected To	Cable
J1	Power Input	Power Supply	N/A
J2_M1	Needle Motor	Needle Motor 112-08-049	N/A
J2_M2	Ejector Motor	Ejector Motor 112-08-046	N/A
J2_M3	Primary Pump	Primary Pump 112-08-068	N/A
J2_M4	Rotor Motor	Rotor Motor 112-08-045	N/A
J2_M5	Wash Pump	Wash Pump 112-08-093	N/A
J31	Valve	Valve 000068	N/A
J5	Smart Card	Smart Card PCBA 1017-02-015	1017-02-017 FPC, Smart Card
J7	Display	Display PCBA 112-02-031	1017-02-016 Display FPC
J13	Barcode Reader	Barcode reader 000239	1017-02-018 IBCR FPC
J21	Speaker	Speaker 112-02-035	N/A
J11	Printer	Printer 000301	112-02-036 Cable Printer
BH1	Battery Holder	N/A	N/A
J9	SD Card	N/A	N/A
J18	Micro USB used for debug	N/A	N/A
J15	Fan	Cooling Fan 112-08-048	N/A
J16	USB 2.0 Receptacle	N/A	N/A
J12	Ethernet Port	N/A	N/A
J5	RS 232 Port	N/A	N/A
<b>BOTTOM</b>			
J6	Robotics	Cuvette Download 112-02-08-05 Download Sensors 112-02-003 Needle Sensors 112-02-032 Support Right 112-02-08-03	Robotic Cable 112-02-016
J8	Analog Cable	Reading LED Support 112-02-004 Reading Sensor Support 112-02-006	Analog Cable 112-02-023

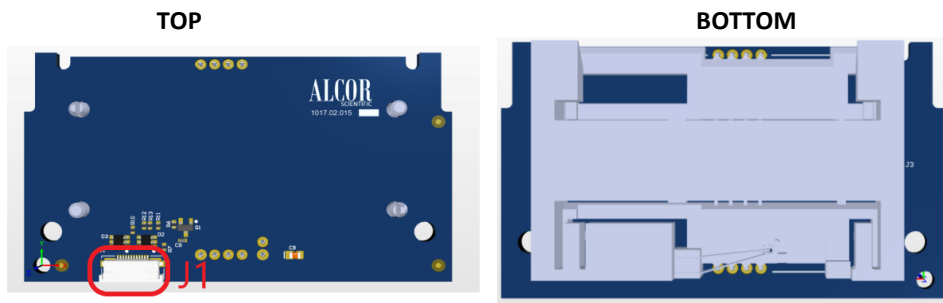
Document Title	Document Description	Version No.
112-27-016	ISED Electrical Diagram	0

### 3.2. Display 112-02-031



Connector	Description	Connected To	Cable
J1	Display Output	Display Panel 000314	N/A
J2	Display Input	Connect to 112-02-030	N/A
J3	Touch Screen	Display Panel	1017-02-016 Display FPC

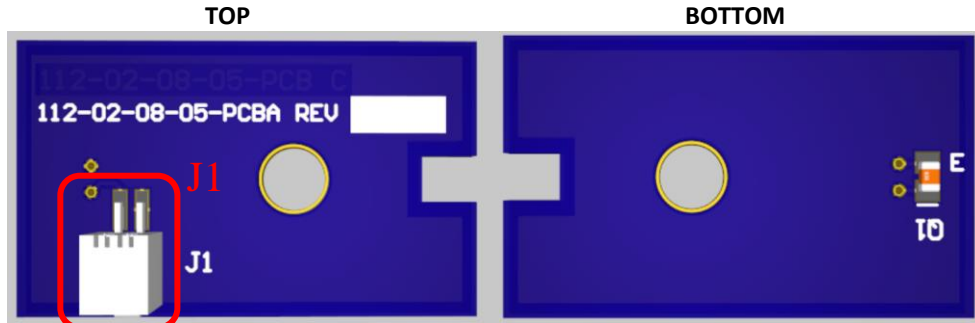
### 3.3. Smartcard 1017-02-015



Connector	Description	Connected To	Cable
J1	Smartcard Signals Input	Mainboard 112-02-030	1017-02-017 FPC, Smart Card

Document Title	Document Description	Version No.
112-27-016	ISED Electrical Diagram	0

### 3.4. Cuvette Download 112-02-08-05



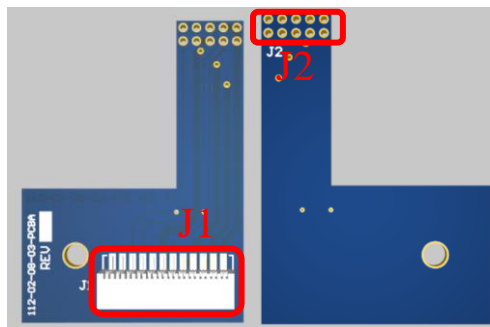
Connector	Description	Connected To	Cable
J1	Signal Output	Mainboard 112-02-030	ROBOTIC CABLE 112-02-016

### 3.5. Download Sensors 112-02-003



Connector	Description	Connected To	Cable
J1	Signal Output	Mainboard 112-02-030	ROBOTIC CABLE 112-02-016

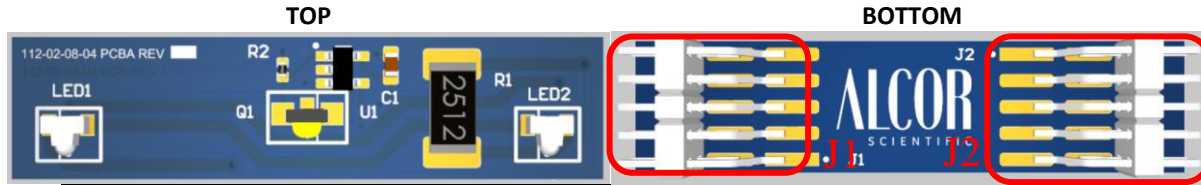
### 3.6. Support Right 112-02-08-03



Connector	Description	Connected To	Cable
J1	Signal Output (Finger Sensors)	Mainboard 112-02-030	ROBOTIC CABLE 112-02-016
J2	Signal connection (Solder)	Sensors UP 112-02-08-04	N/A Solder

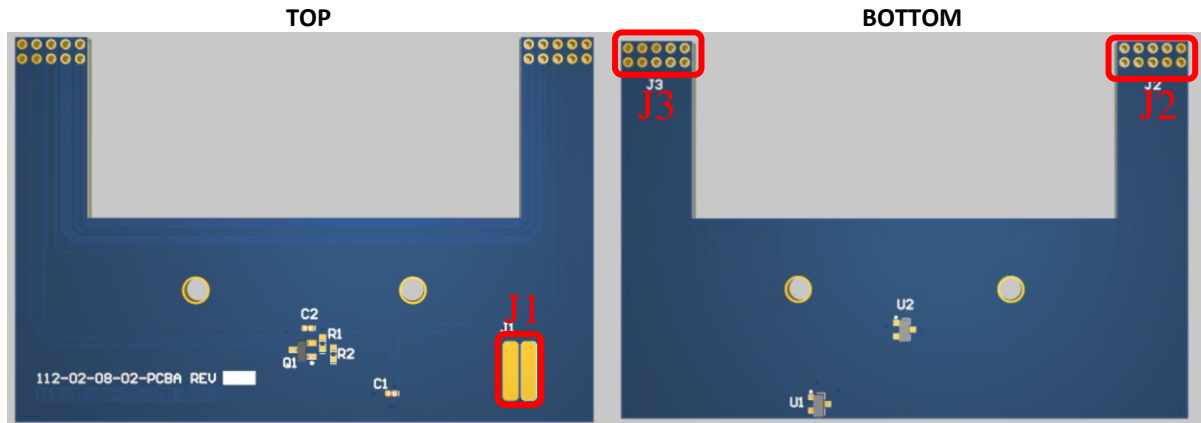
Document Title	Document Description	Version No.
112-27-016	ISED Electrical Diagram	0

### 3.7. Sensors Up 112-02-08-04



Connector	Description	Connected To	Cable
J1	Signal connection (Solder)	Support Right 112-02-08-04	N/A Solder
J2	Signal connection (Solder)	Support Left 112-02-08-02	N/A Solder

### 3.8. Support Left 112-02-08-02



Connector	Description	Connected To	Cable
J1	Solder pads	Cuvette D TX 112-02-08-06	112-02-026 Solder
J2	Signal connection (Solder)	Sensors UP 112-02-08-04	N/A Solder
J3	Signal connection (Solder)	Sensors Down 112-02-08-01	N/A Solder

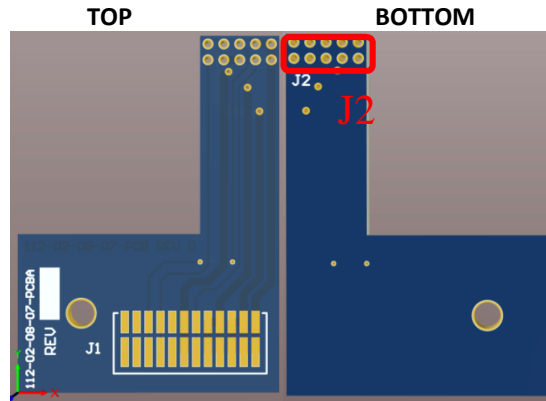
### 3.9. Sensors Down 112-02-08-01



Connector	Description	Connected To	Cable
J1	Signal connection (Solder)	Support Left 112-02-08-02	N/A Solder
J2	Signal connection (Solder)	Support right down 112-02-08-07	N/A Solder

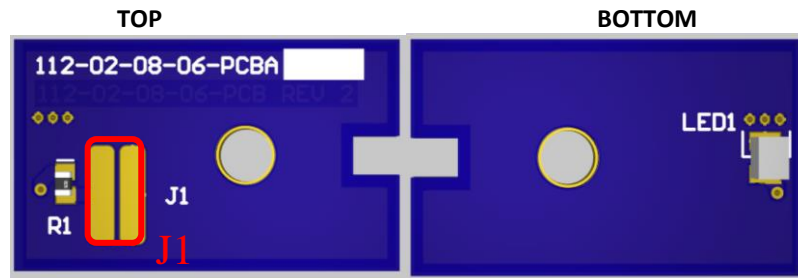
Document Title	Document Description	Version No.
112-27-016	ISED Electrical Diagram	0

3.10. Support Right Down 112-02-08-07



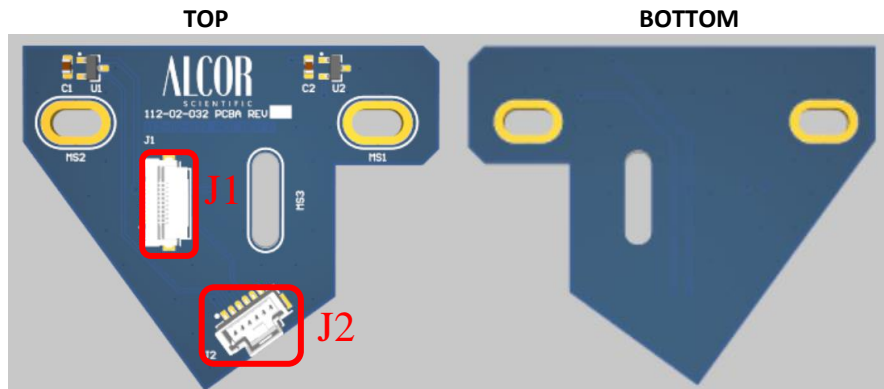
Connector	Description	Connected To	Cable
J2	Support only	Sensors Down 112-02-08-01	N/A Solder

3.11. Cuvette Download TX 112-02-08-06



Connector	Description	Connected To	Cable
J1	Solder Pads	Support Left 112-02-08-02	112-02-026 Solder

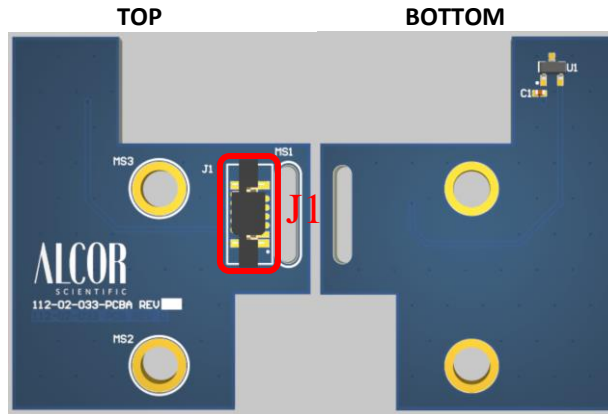
3.12. Needle Sensors 112-02-032



Connector	Description	Connected To	Cable
J1	Signal connection	Needle Probe Sensor 112-02-033	FFC 000305
J2	Signal connection	Mainboard 112-02-030	Robotic Cable 112-02-016

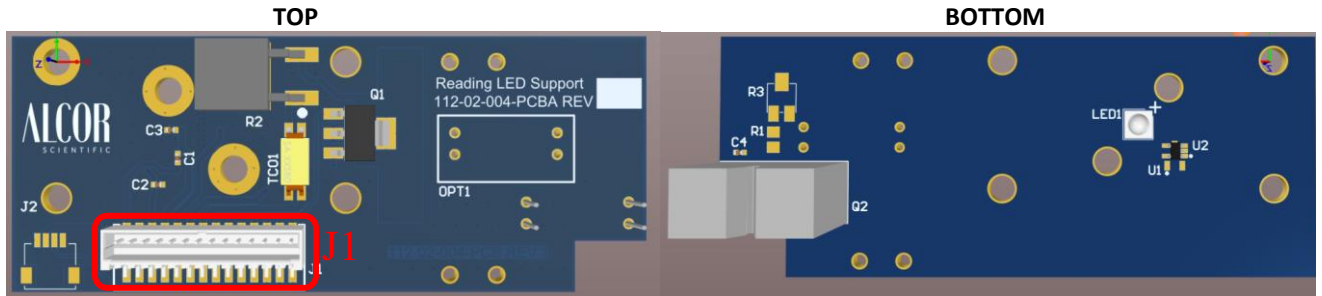
Document Title	Document Description	Version No.
112-27-016	ISED Electrical Diagram	0

3.13. Needle Probe Sensor 112-02-033



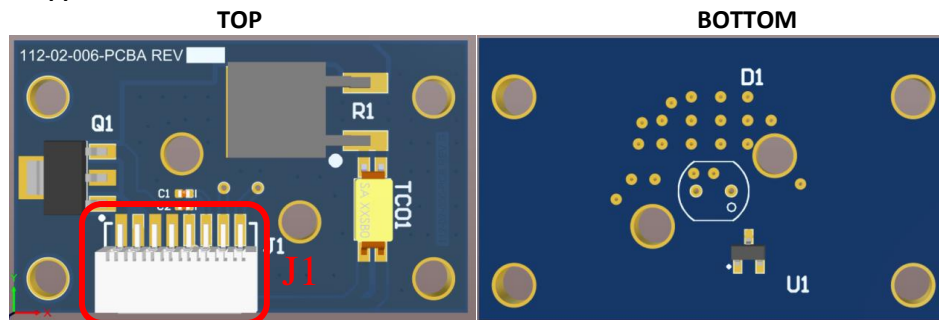
Connector	Description	Connected To	Cable
J1	Signal connection	Needle Sensors 112-02-032	FFC 000305

3.14. Reading LED Support 112-02-004



Connector	Description	Connected To	Cable
J1	Signal connection	Mainboard 112-02-030	Analog Cable 112-02-023

3.15. Reading Sensor Support 112-02-006



Connector	Description	Connected To	Cable
J1	Signal connection	Mainboard 112-02-030	Analog Cable 112-02-023