



iSED® / iSED® ELITE Automated Erythrocyte Sedimentation Rate Analyzer

Ejector Port Spacer Installation, 222-28-006 Rev. 0

Purpose

The purpose of this procedure is to guide the customer in performing the required preventative maintenance of installing the Ejection Port Spacer in the iSED® (serial number 5000 and higher) and iSED® Elite instruments to ensure successful ejection of Sarstedt type sample tubes.

Scope

This applies to all iSED® (serial number 5000 and higher) and iSED® Elite instruments that are intended to be used with Sarstedt style sample tubes.

Required

1. All necessary Personal Protective Equipment including nitrile gloves, safety glasses.
2. iSED Elite or iSED (SN>5000) Complete Assembly.
3. Ejection Port Spacer Kit (222-13-008).
4. Lab Coat is recommended.
5. Biohazard Disposal.
6. Scotch tape, masking tape, or painter's tape.
7. Alcohol Wipe, or 99% isopropyl alcohol.
8. Dry cloth.

Note

Color, scale, or precise details of actual parts and assemblies may vary from those depicted in the images contained in this procedure.

Preparation

1. Power off instrument and disconnect the power supply from power input at the rear of the device. See Figure 1.

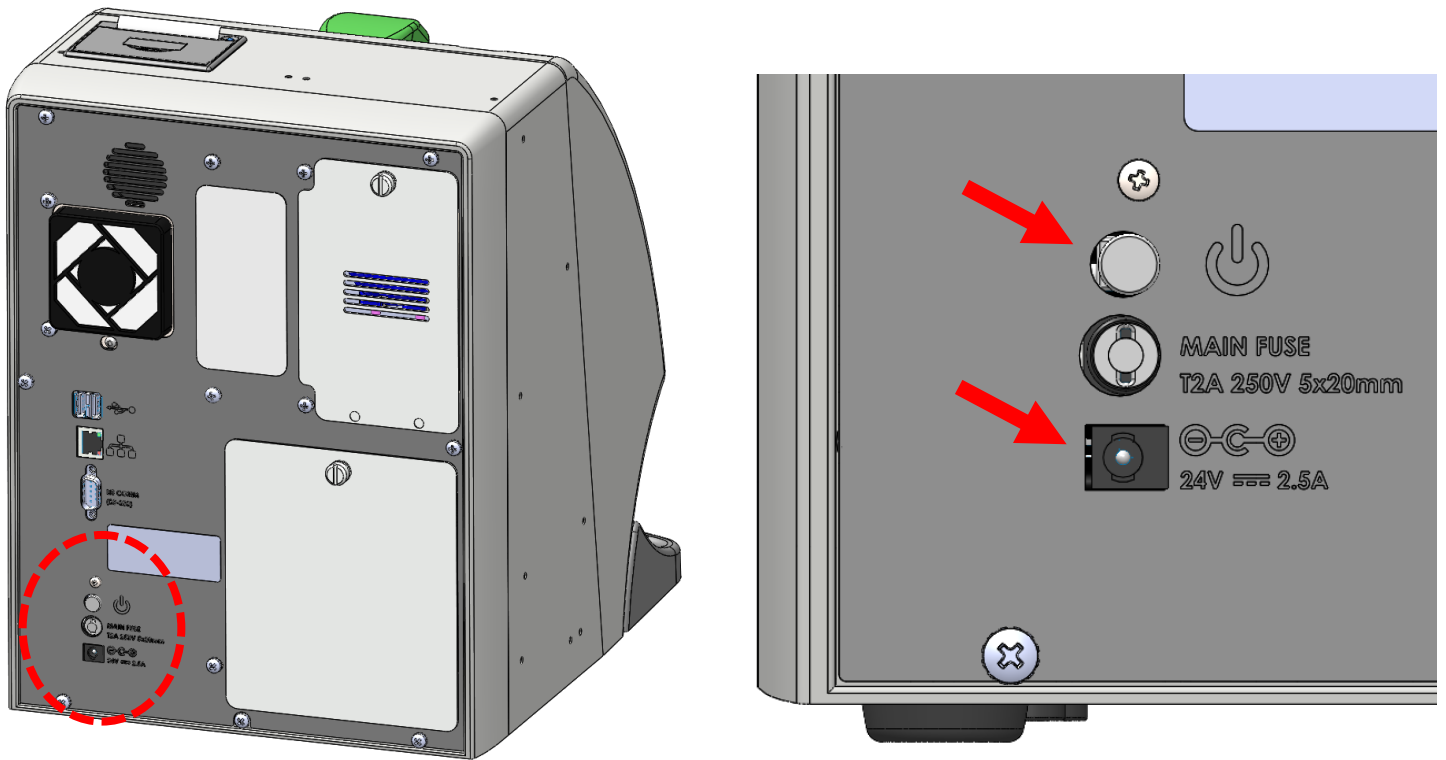


Figure 1

Procedure – Install the Spacer

1. Place the instrument on a flat surface, with the front of the device facing the operator. Use an alcohol wipe, or a cloth dampened with 99% isopropyl alcohol to wipe the left-side metal wall behind the ejection port. Wipe dry with a dry cloth. This area is circled in the cutaway view in Figure 2. Discard all consumable items in this step appropriately.

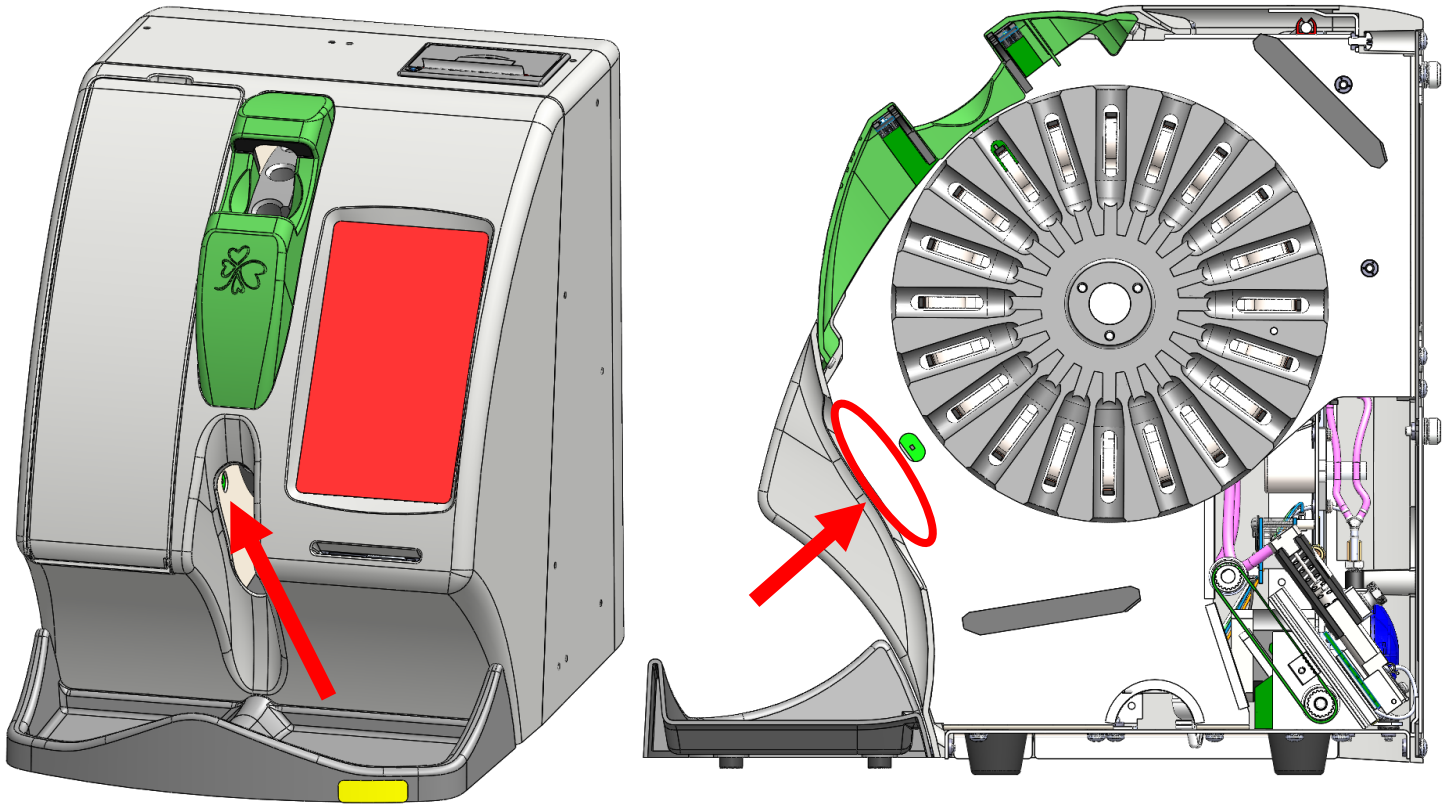


Figure 2

2. Make a loop of masking tape, scotch tape, or painter's tape and apply to the front of the Ejection Port Spacer Sub Assembly, as shown in Figure 3. This will assist in installation in Step 4.



Figure 3

3. Remove and discard the backing of the double-sided tape on the rear of the Ejection Port Spacer Sub Assembly, shown in Figure 4.

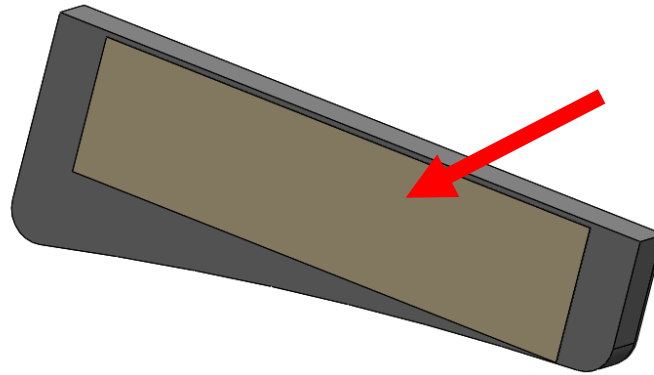


Figure 4

4. Install the Ejection Port Spacer Sub Assembly onto the left metal wall from Step 1. Stick fingers onto the loop of tape formed in step 2 to assist in positioning the spacer inside the instrument. Reference Figure 5 for this step.
 - A. Ensure the curved surface of the spacer is facing out, and the double-sided tape is facing the left metal wall.
 - B. Ensure the edge of the spacer rests gently against the ejection port opening of the plastic front bezel.
 - C. Ensure the spacer is roughly centered about the tube sensor slot in the metal wall.
 - D. When the spacer is in position, press the spacer down against the left metal wall. Hold the spacer in place for 30 seconds before releasing. Remove and discard the loop of masking tape, scotch tape, or painter's tape from the spacer.

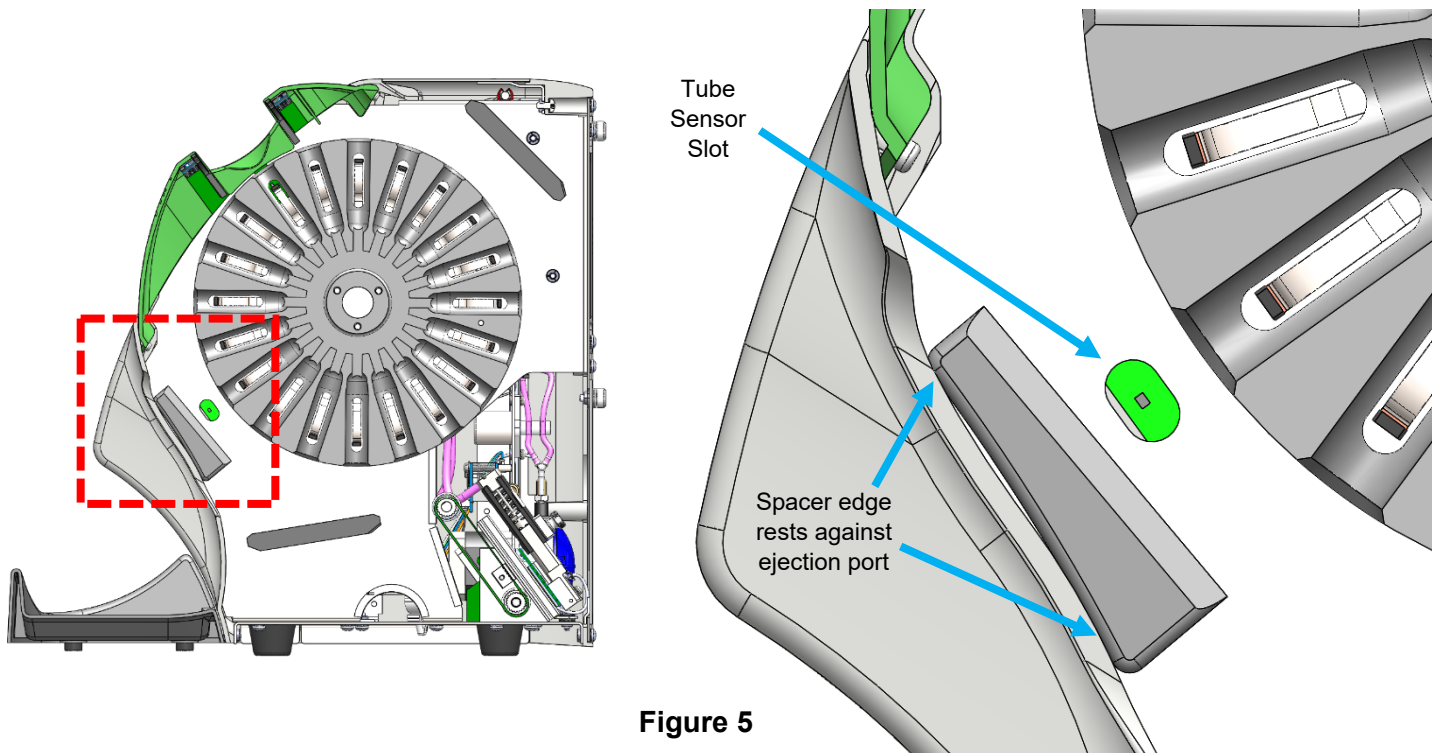


Figure 5