



Document Title	Document Description	Version No.
1017-27-005	miniISED Electrical Diagram	0

## 1. Purpose

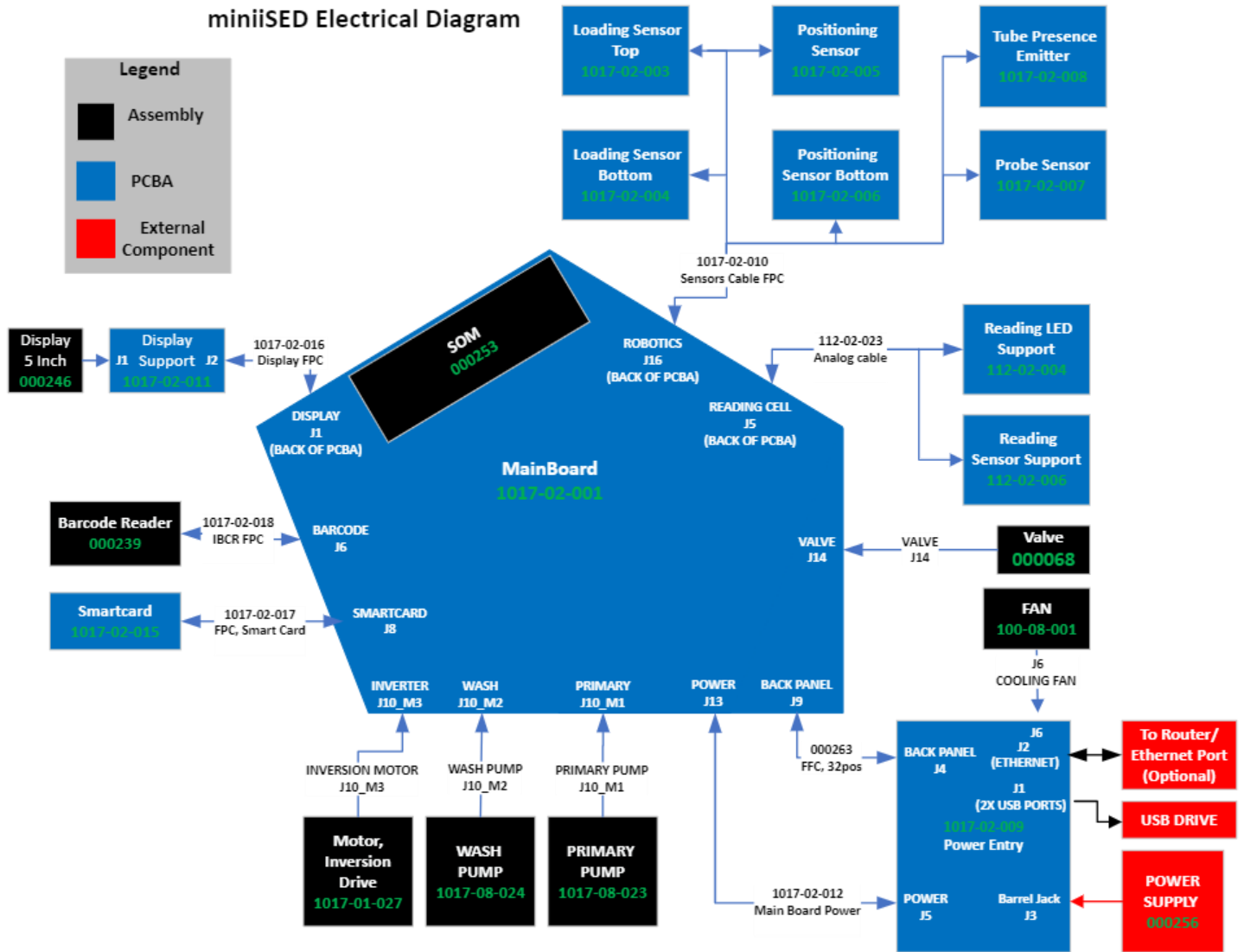
This document is used as a reference for all assemblers and service technicians of the miniISED® analyzer. This document contains diagrams that identify all currently used connectors for attaching peripherals and modules needed for miniISED® function.

## 2. Scope

This document will be used as a reference for the miniISED® Device History Record (1017-27-001).

Document Title	Document Description	Version No.
1017-27-005	miniSED Electrical Diagram	0

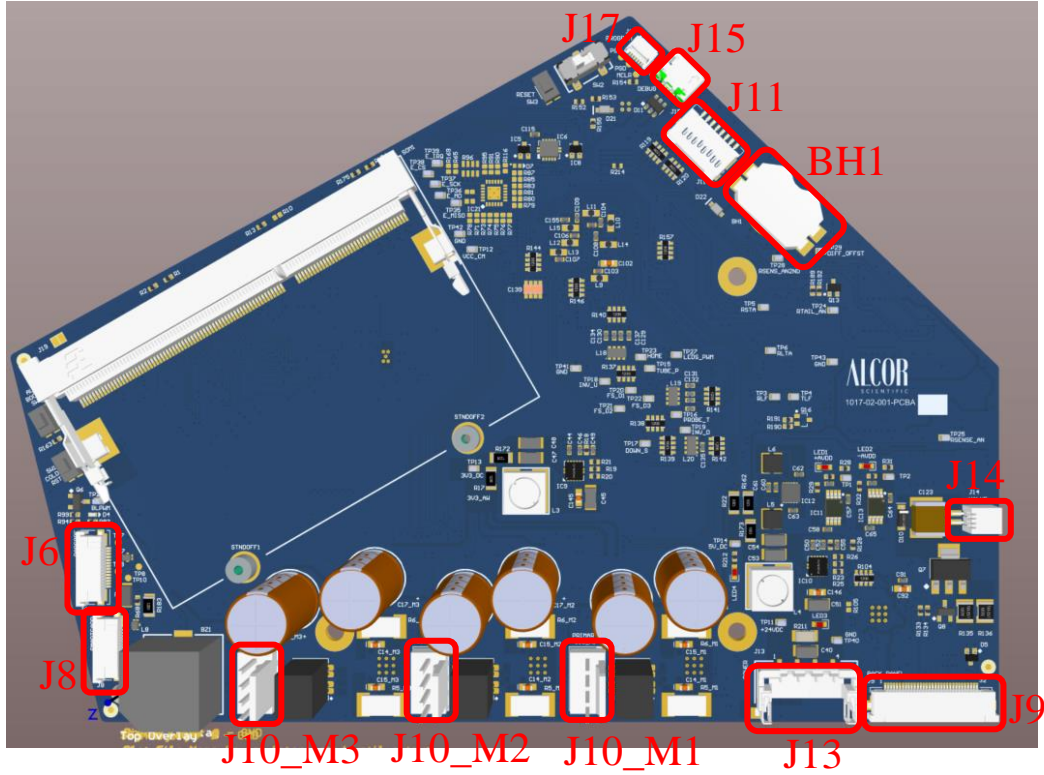
### 3. Electrical Diagram



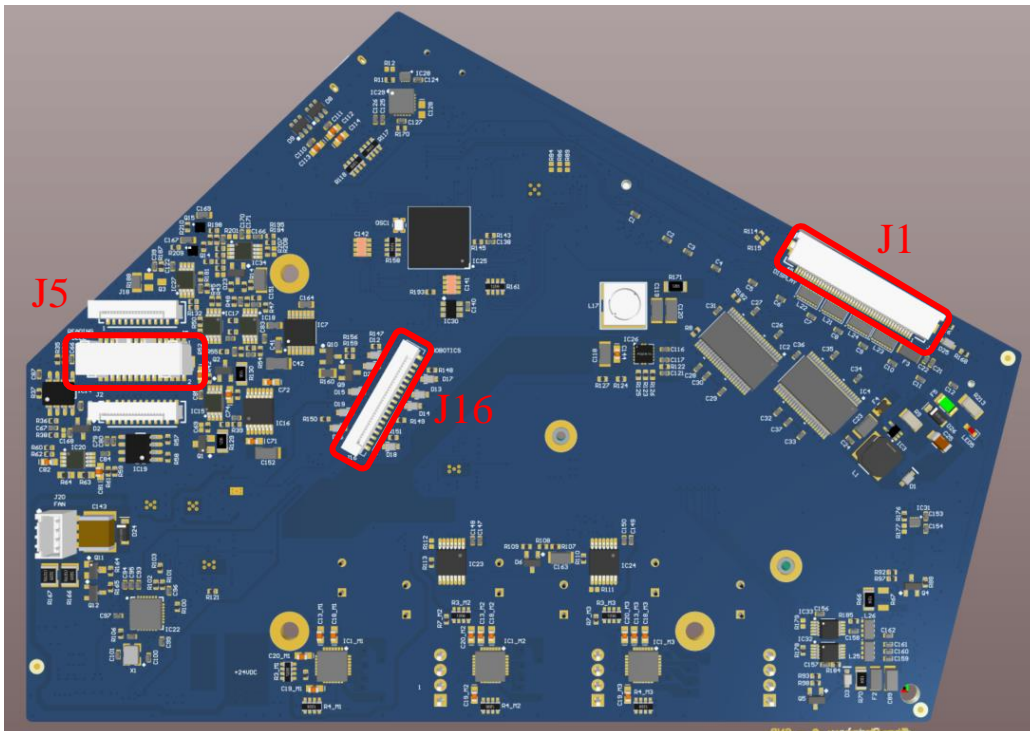
Document Title	Document Description	Version No.
1017-27-005	miniSED Electrical Diagram	0

### 3.1. Mainboard PCBA 1017-02-001

**Top**



**Bottom**

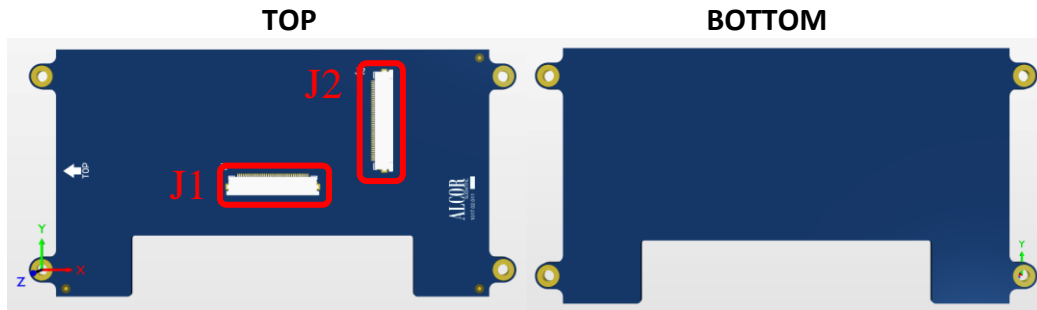


Document Title	Document Description	Version No.
1017-27-005	miniISED Electrical Diagram	0

Connector	Description	Connected To	Cable
J9	Back Panel	Back Panel PCBA 1017-02-009	FFC,32 POS 000263
J13	POWER Input	Back Panel PCBA 1017-02-009	Main Board Power, 1017-02-012
J10_M1	Primary Pump	Primary Pump 1017-08-023	N/A
J10_M2	Wash Pump	Wash Pump 1017-08-024	N/A
J10_M3	Inversion Motor	Inversion Motor 1017-01-027	N/A
J8	Smart Card	Smart Card 1017-02-015	FPC, Smart Card 1017-02-017
J6	Barcode Reader	Barcode Reader 000239	IBCR FPC 1017-02-018
J17	Programing Cable	N/A Programming only	N/A
J15	Micro USB	N/A For debugging only	N/A
J11	Micro SD for programming	N/A	N/A
BH1	Battery Holder	N/A	N/A
J14	Valve	Valve 000068	N/A
<b>BOTTOM</b>			
J1	Display	Display PCBA 1017-02-011	Display FPC, 1017-02-016
J5	Reading Cell	Reading Led Support 112-02-004 Reading Sensor Support 112-02-006	Analog cable 112-02-023
J16	Robotics	Loading Sensor TOP 1017-02-003 Loading Sensor BOT 1017-02-004 Positioning Sensor 1017-02-005 Positioning Sensor BOT 1017-02-006 Tube Presence Emitter 1017-02-008 Probe Sensor 1017-02-007	Sensors Cable FPC 1017-02-010

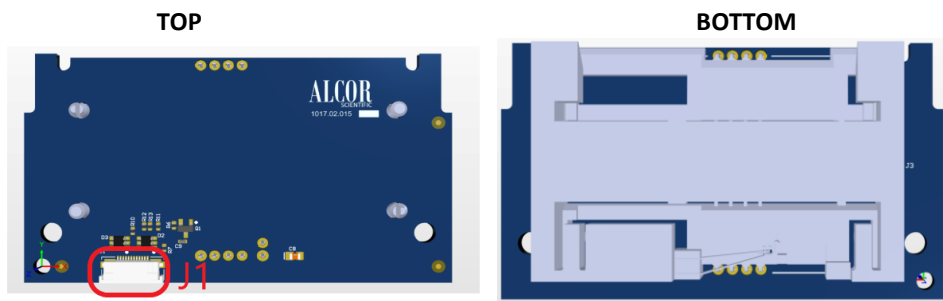
Document Title	Document Description	Version No.
1017-27-005	miniSED Electrical Diagram	0

### 3.2. Display 1017-02-011



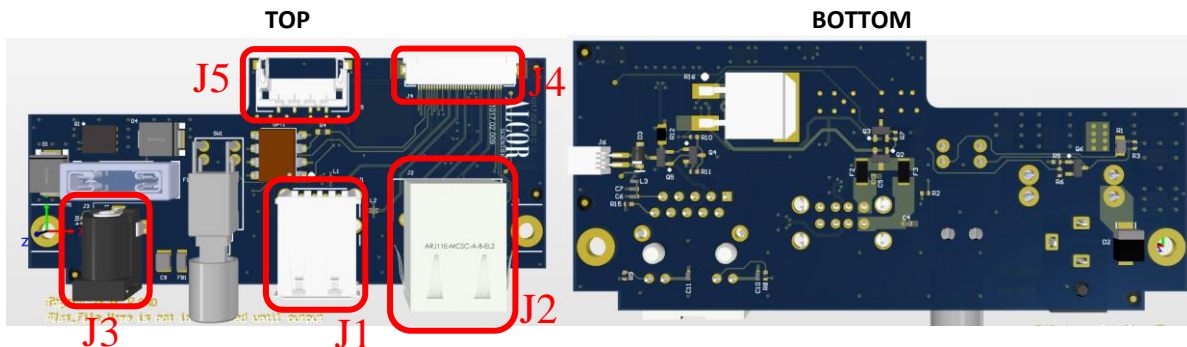
Connector	Description	Connected To	Cable
J1	Display Output	Display Panel 000246	N/A
J2	Display Input	Connect to Mainboard 1017-02-001	Display FPC, 1017-02-016

### 3.3. Smartcard 1017-02-015



Connector	Description	Connected To	Cable
J1	Smartcard Signals Input	Mainboard 112-02-030	1017-02-017 FPC, Smart Card

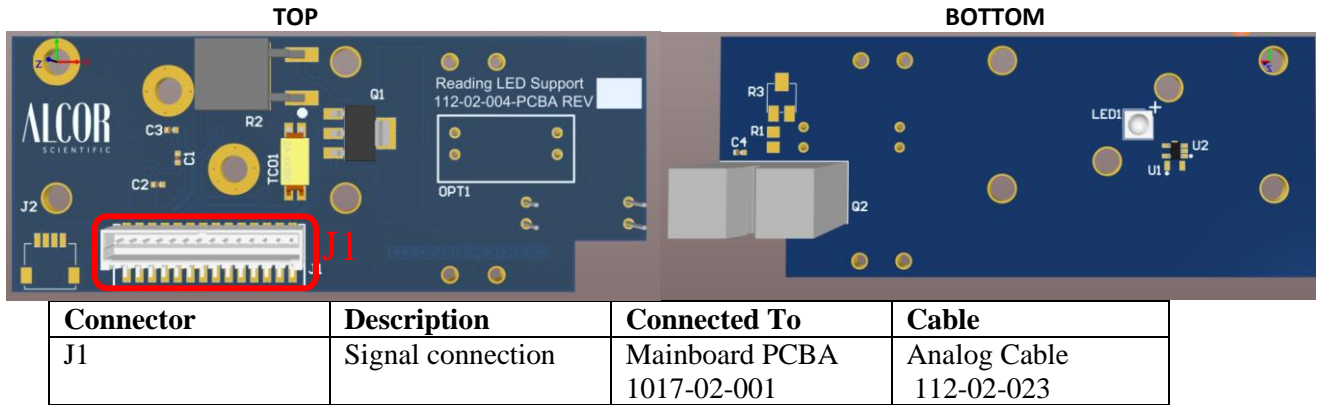
### 3.4. Back Panel 1017-02-009



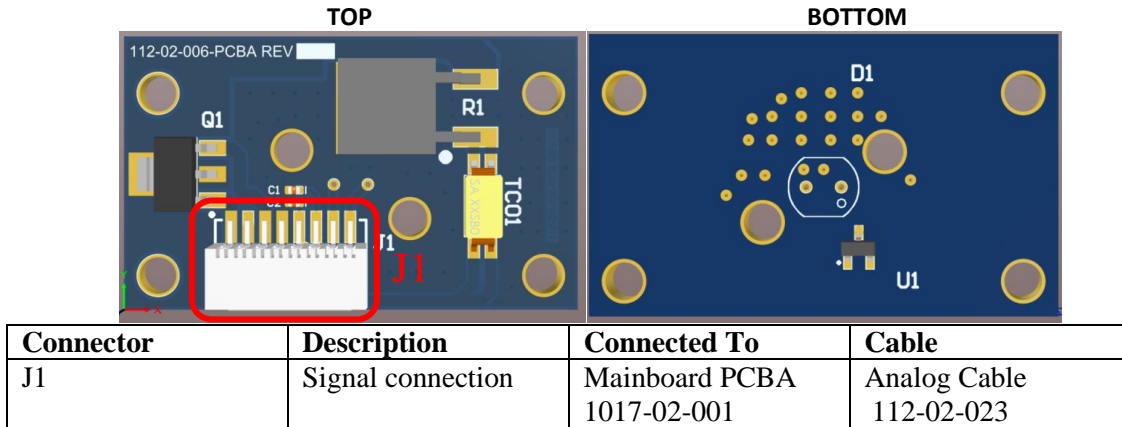
Connector	Description	Connected To	Cable
J1	Smartcard Signals Input	Mainboard 112-02-030	1017-02-017 FPC, Smart Card
J2	Ethernet Port	N/A	N/A
J3	Power Input	Power Supply	N/A
J4	Signals	Mainboard PCBA 1017-02-001	FFC,32 POS 000263
J5	Power	Mainboard PCBA 1017-02-001	Main Board Power, 1017-02-012

Document Title	Document Description	Version No.
1017-27-005	miniSED Electrical Diagram	0

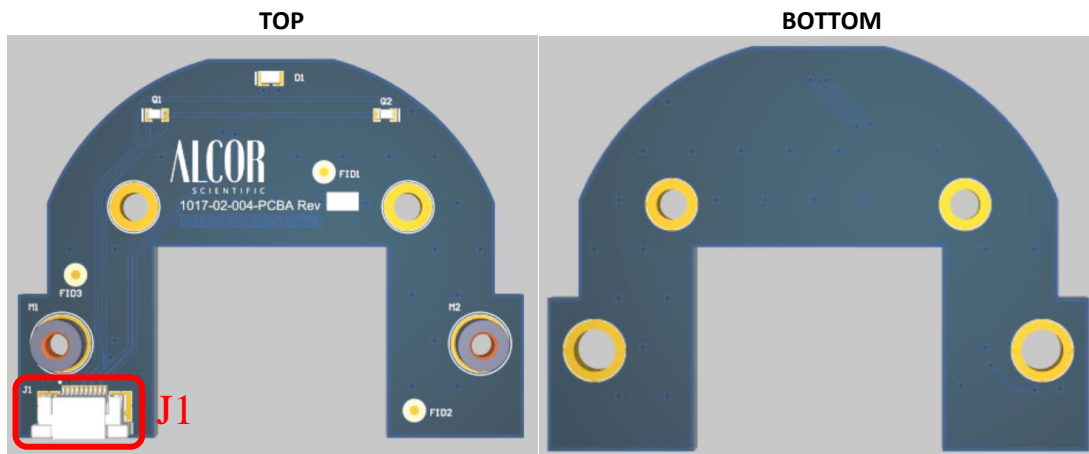
### 3.5. Reading LED Support 112-02-004



### 3.6. Reading Sensor Support 112-02-006



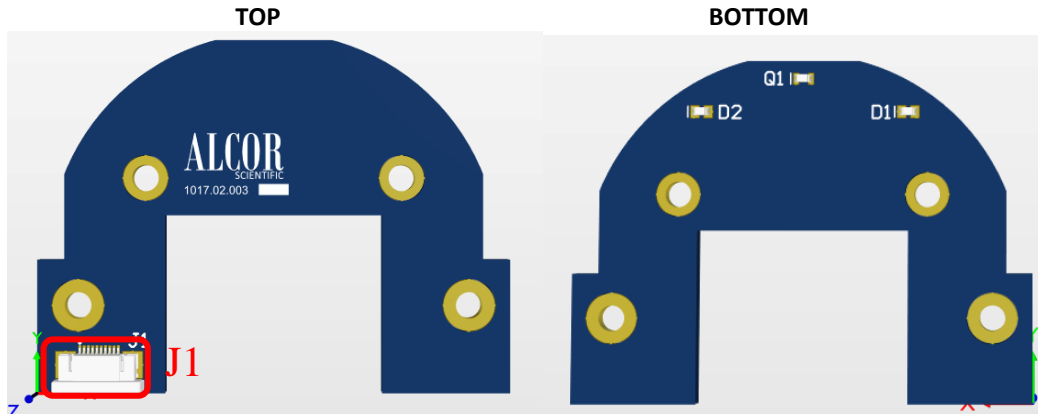
### 3.7. Loading Sensor Bottom 1017-02-004



Connector	Description	Connected To	Cable
J1	Signal connection	Mainboard PCBA 1017-02-001	Sensors Cable FPC 1017-02-010

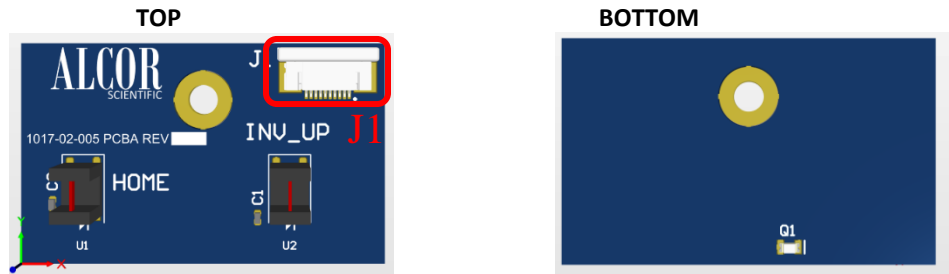
Document Title	Document Description	Version No.
1017-27-005	miniSED Electrical Diagram	0

### 3.8. Loading Sensor Top 1017-02-003



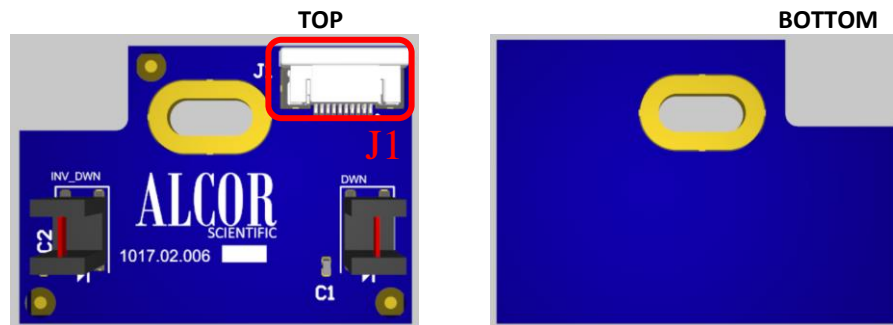
Connector	Description	Connected To	Cable
J1	Signal connection	Mainboard PCBA 1017-02-001	Sensors Cable FPC 1017-02-010

### 3.9. Positioning Sensor 1017-02-005



Connector	Description	Connected To	Cable
J1	Signal connection	Mainboard PCBA 1017-02-001	Sensors Cable FPC 1017-02-010

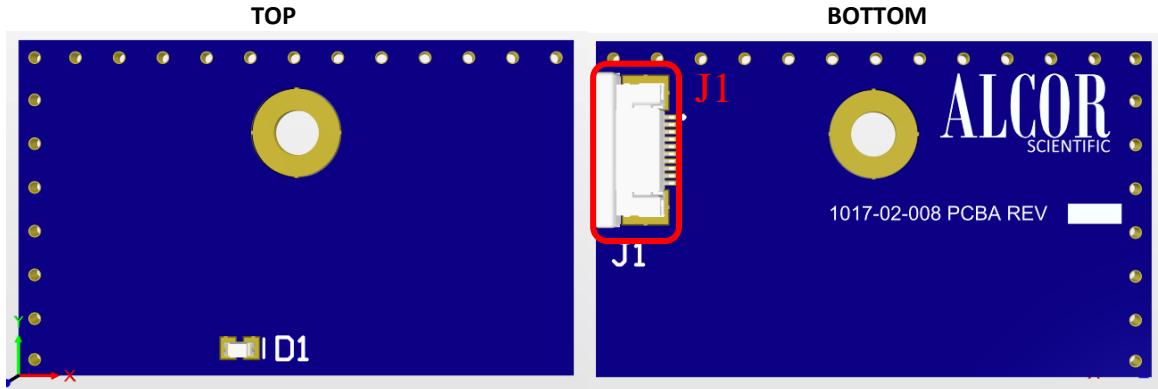
### 3.10. Positioning Sensor Bottom 1017-02-006



Connector	Description	Connected To	Cable
J1	Signal connection	Mainboard PCBA 1017-02-001	Sensors Cable FPC 1017-02-010

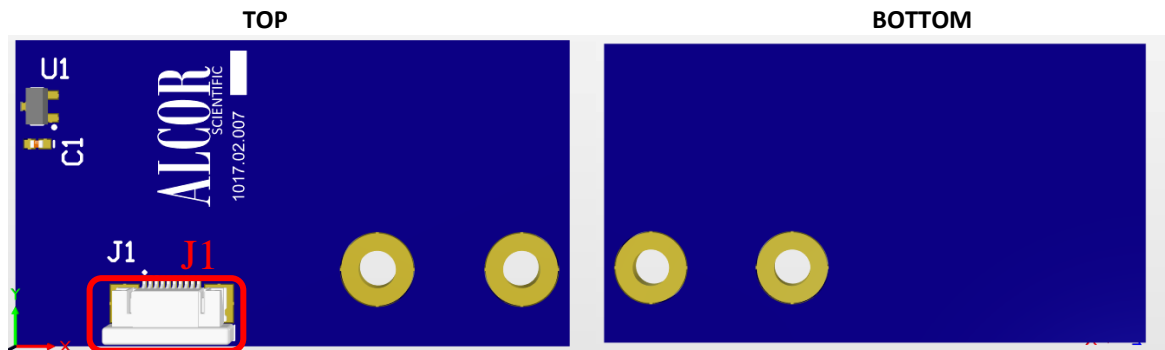
Document Title	Document Description	Version No.
1017-27-005	miniSED Electrical Diagram	0

### 3.11. Tube presence emitter 1017-02-008



Connector	Description	Connected To	Cable
J1	Signal connection	Mainboard PCBA 1017-02-001	Sensors Cable FPC 1017-02-010

### 3.12. Probe Sensor 1017-02-007



Connector	Description	Connected To	Cable
J1	Signal connection	Mainboard PCBA 1017-02-001	Sensors Cable FPC 1017-02-010