



iSED® PRO

OPERATIVE SOFTWARE UPGRADE INSTRUCTIONS

Purpose

This procedure describes the process of updating the Operative Software for the iSED® PRO Automated ESR Analyzer.

Materials

1. iSED PRO Analyzer, all models
2. iSED PRO Software Upgrade Kit (Cat. No. 120-13-001 or electronic)

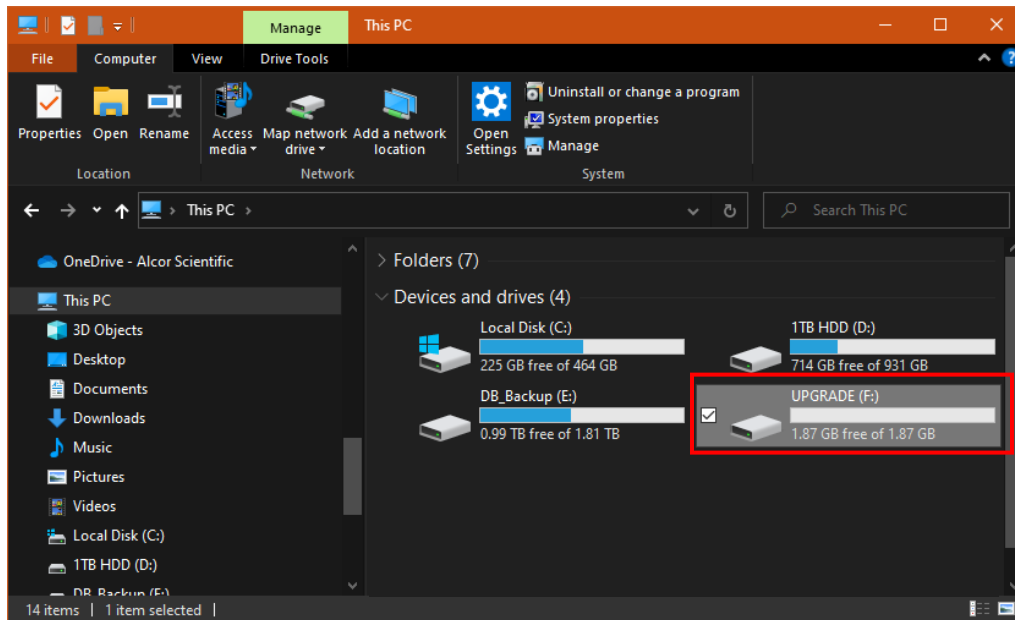
If preparing a flash drive from files provided by ALCOR electronically you will need the following additional items:

1. Blank USB Flash Drive with capacity of 16GB or greater.
2. Windows 7 or higher PC with available USB 2.0 or greater port.

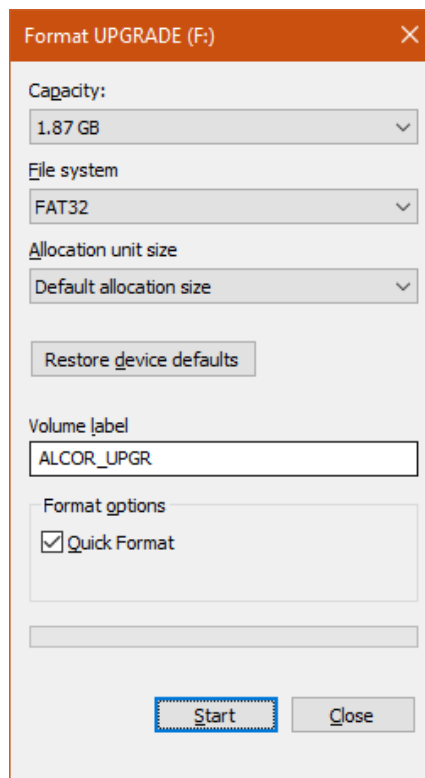
Preparation of Software Upgrade Provided Electronically:

If a Software Upgrade Kit is not provided physically, one can be prepared with electronic files provided by Alcor Scientific. If you were not provided with either a physical or electronic kit, please contact ALCOR Technical Support (techservice@alcorscientific.com) for more information.

1. Insert Flash drive into a USB 2.0 port on the Windows PC.
2. Navigate to “My PC” in File Explorer and locate the Flash Drive.
NOTE: the flash drive’s letter designation (e.g., “(F:)” may be different on each computer. In the below image, the USB drive is (F:)



3. Right click the drive icon and press “Format”
4. In the dropdown menus, select the following settings:
 - File System: FAT32
 - Allocation unit size: “Default allocation size”
 - Volume Label: enter “ALCOR_UPGR”
 - Quick Format: Checked



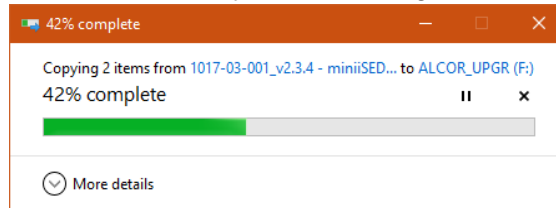
5. **WARNING: This step will delete all files contained on the Flash Drive. Be sure to backup any data contained on the flash drive prior to this step as the data will not be recoverable.**

Click Start and Click “OK” to confirm erasure and reformatting of the USB drive. Wait for formatting to complete and click OK on the completion message. Click “close” to exit the format window.

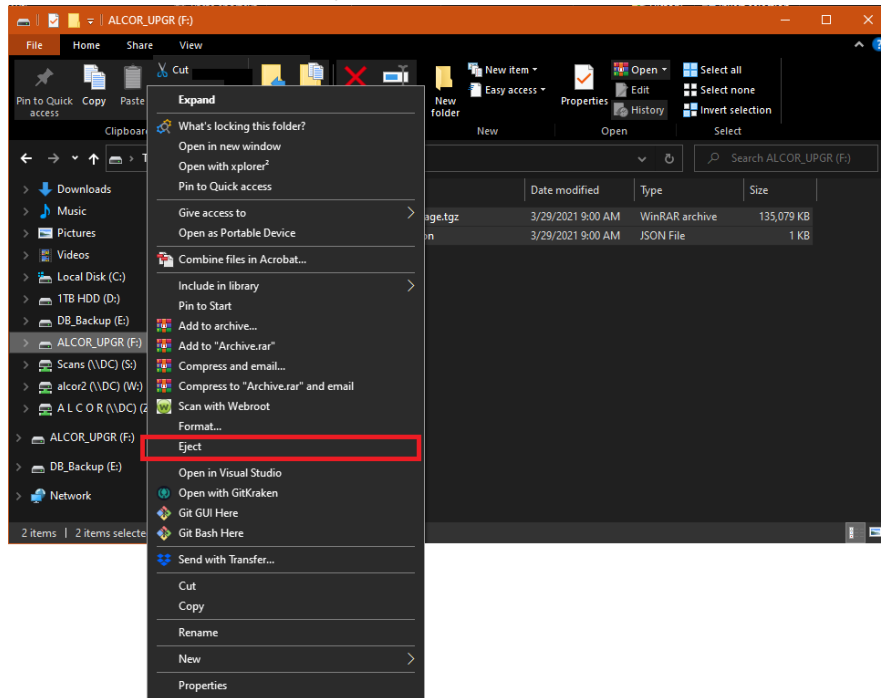
6. Download the upgrade package from the download link provided by ALCOR Technical Support. Navigate to the download location of the iSED PRO Software Upgrade package files.

NOTE: The upgrade package will contain 2 files: 1) “iSEDPRO_upgrade.json” file and 2) “iSEDPRO_vx.y.z.package.tgz”, where x.y.z is the version number.

7. Select both files, right click one file, and press “COPY”
8. Navigate back to the USB flash drive and paste the 2 files to the “root directory” of the drive. DO NOT PLACE THE FILES INTO A FOLDER.
9. Wait for the copy action to complete. When the copy window reaches 100% and it disappears, wait 15-20 seconds for any hidden background activity to finish.



10. Right click the drive, and press “Eject.”



11. Remove the Flash Drive from the Windows PC.

Software Upgrade Procedure

1. Be sure your iSED PRO device is connected to a power source and powered on in an idle state. Make sure the device is not currently processing any samples.
2. Perform a successful Quick Clean prior to starting procedure.
3. Insert the USB Flash Drive with Software into one of the two USB ports on the rear of the device or the USB port located at the front of the device. (Figure 1)

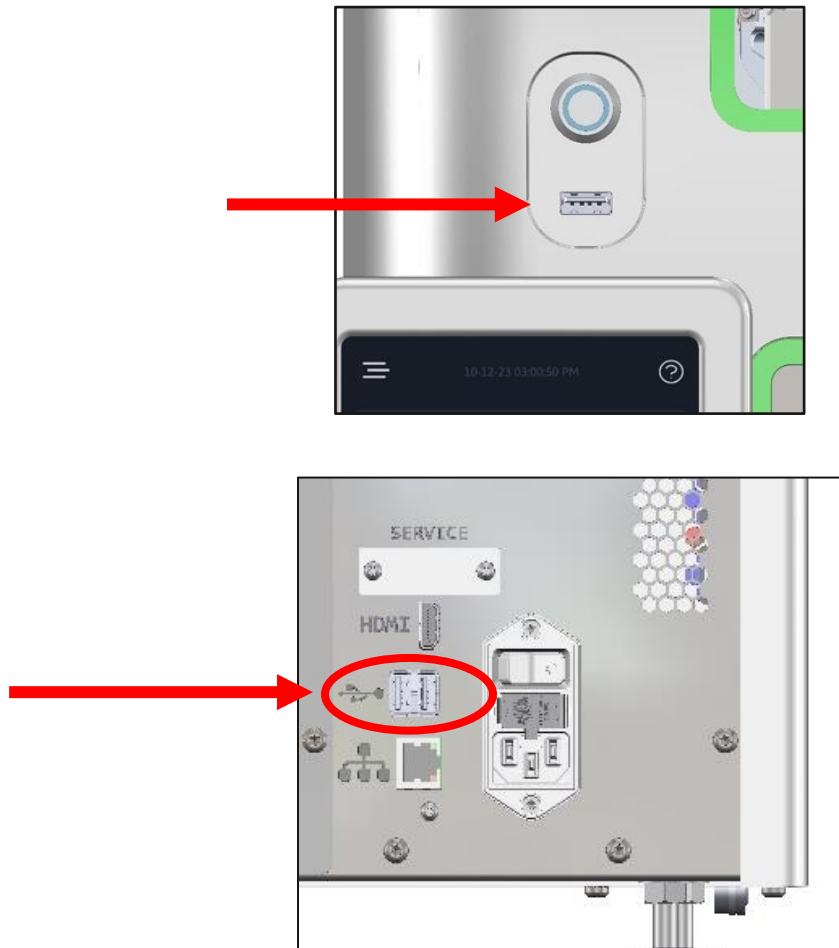


Figure 1

4. Confirm both of the following messages appear: “USB device attached” and “USB Storage found”.
5. Navigate through Menu → Settings → General → Upgrade
6. Press “Validate Upgrade”. Device will check the USB for a valid upgrade package.
7. Once validated, device will display the version to be installed. Confirm and start upgrading by pressing the “Upgrade” button. (Figure 2)

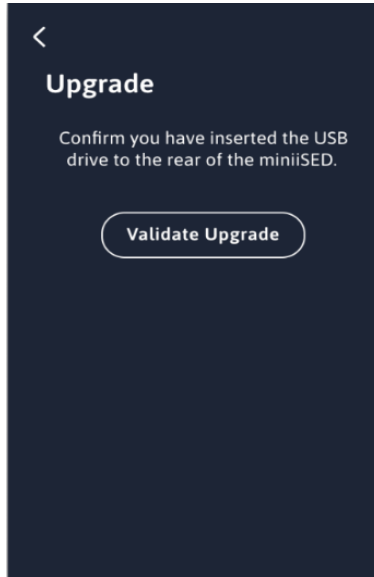


Figure 2

8. The device will reboot itself and show “Update in Progress” screen (Figure 3). It will then move on to a “Firmware Status” screen while installing additional firmware, then advance to the Graphical User Interface upon completion.
NOTE: This may take up to five minutes and certain screens may appear more than once.

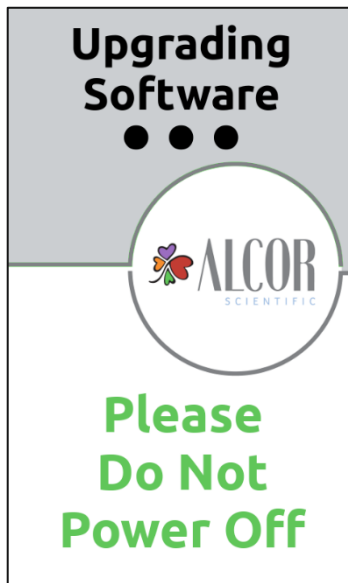


Figure 3

9. Confirm the update was installed properly by observing for three events:
- 1) The Rack Status lights illuminate to green color
 - 2) The Robotic Arm goes through Power On Self Test (POST) successfully.
 - 3) The System runs a wash and the system displays available test credits.
- NOTE: if any of these fail to happen, or you receive an error message, contact Technical Support.

10. Confirm the Package Version is now showing the version specified in the upgrade package (Figure 4) by navigating to Menu → Settings → Advanced Settings and scrolling down.



Figure 4: Example version listing on iSED PRO UI