



# iSED<sup>®</sup> ROUTINE MAINTENANCE

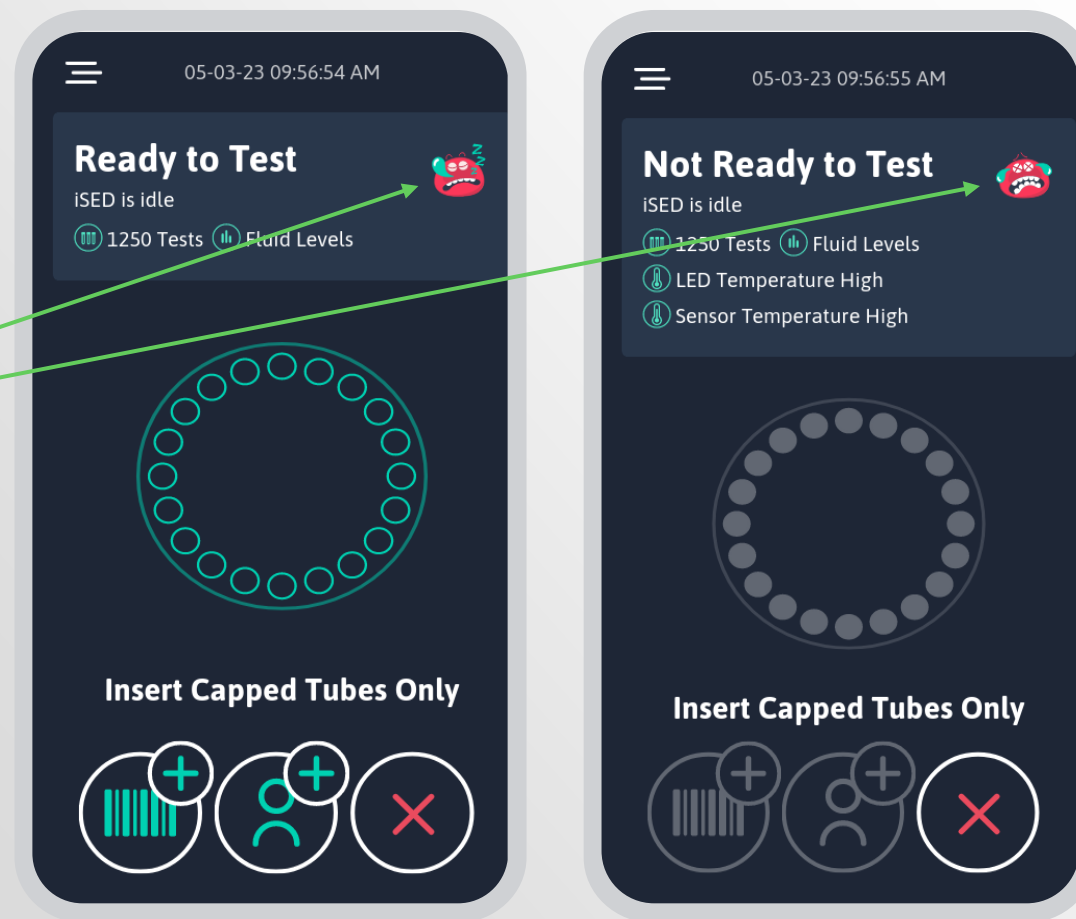
Analyzer Alarms, Errors and Routine Maintenance

# INTRODUCTION

Proper maintenance of the instrument is required to ensure optimal performance.

The iSED Home Screen contains a window where all active system status messages appear. An animated emoji accompanies these messages to provide a quick visual reference to the general operating status of the analyzer.

**It is important to be mindful of this status window.**

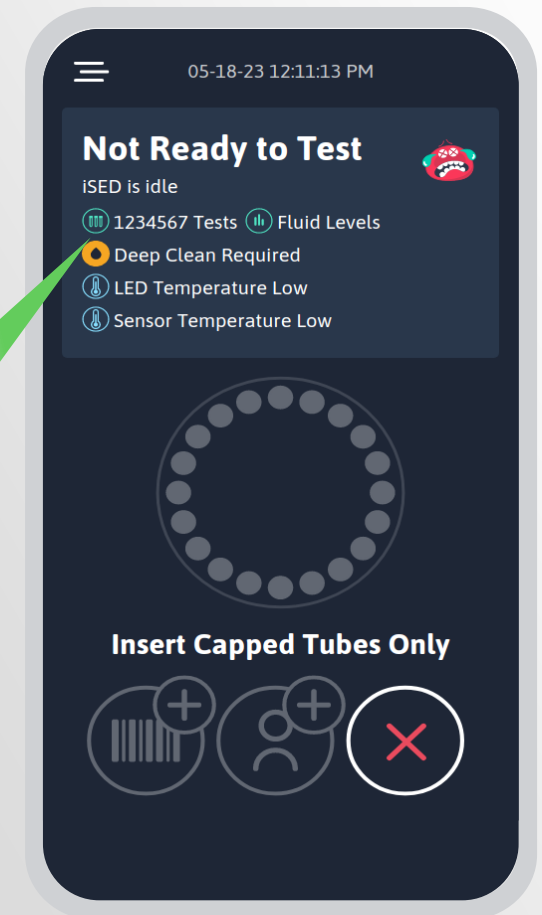


# DEEP CLEANING

Deep cleaning is an important part of preventative maintenance. The recommended frequency for deep cleaning the analyzer is **monthly** or every **1,000 samples**, whichever occurs first rule applies. This action will clean the aspiration pathway from the needle to the reading cell.

 Deep Clean Required

A message will appear in the status window of the Home Screen when a deep clean is required.



# PERFORMING A DEEP CLEAN CYCLE

 **WARNING:** Universal precautions should be followed. Always wear gloves to prevent exposure to pathogens. Dispose of bio-hazardous waste properly.

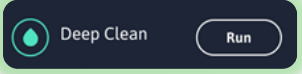
## Materials needed:

- deepCLEAN®  
Or
- Empty and unused 13x75mm EDTA tubes with pierceable caps.
- 6-7% hypochlorite (bleach) Do not dilute unless greater than 7%.
- iWASH

## To fill bleach tubes:

- Remove cap from empty tube.
- Fill the tube with bleach.
- Recap the tube.

## To run a deep clean cycle:

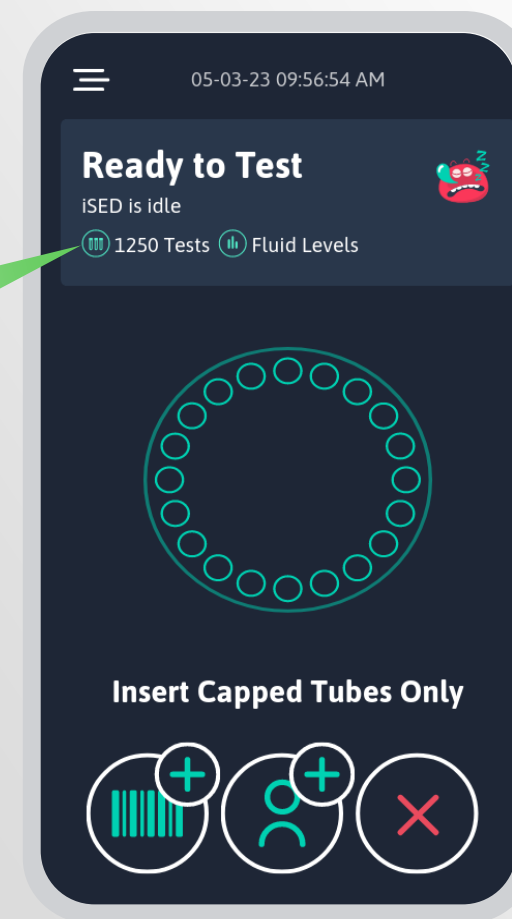
- Select the “run”  icon to activate a deep clean.
- A prompt to insert the deepCLEAN tube or manually prepared bleach tube will be displayed on the touchscreen.
- Insert the bleach tube.
- The deep wash cycle takes approximately 3 minutes, and a countdown timer will display on the screen.

# LOW TEST CREDITS

The number of Test Credits is displayed in the status window of the Home Screen. When Test Credits become low, more Test Credits needed to be added in order not to disrupt analyzer operation.

 1250 Tests

Available Test Credits



iLEARN

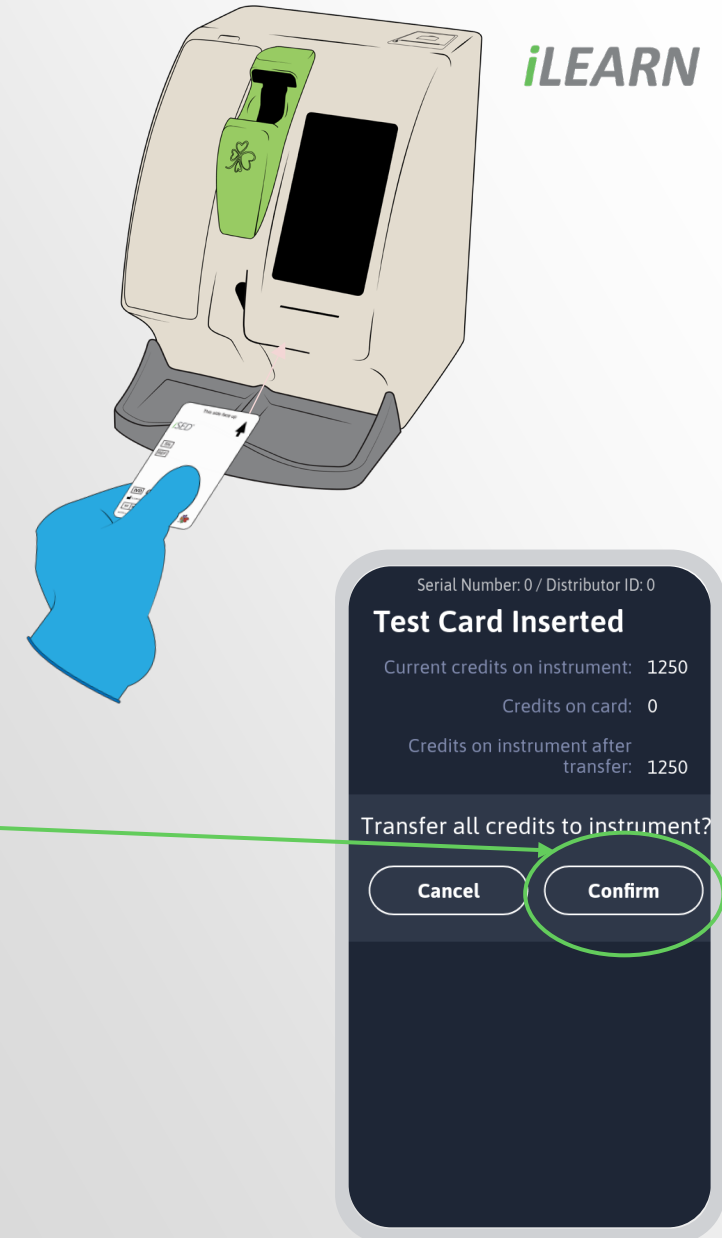
# ADDING TEST CREDITS

Test Credits are required to operate the analyzer. The Home Screen and Maintenance menu display the number of Test Credits available. Test Credits are downloaded to the analyzer via a pre-loaded Test Card.

## To download Test Credits:

1. Insert your Test Card into the test card reader with the arrow facing forward and upward.
2. Once the Test Card is inserted, the next screen will show the number of Test Credits currently on the instrument, the serial number of the card, and the number of Test Credits on the card. If the user taps "Confirm", all the available credits will be transferred to the analyzer.
3. The new total of available tests will display on the screen. Remove the empty Test Card and discard; **the test card cannot be reused.**

**Test Credits never expire! Whether loaded on the analyzer or still contained in the Test Card, there is no time limit for you to use available Test Credits.**



# LOW iWASH BOTTLE OR FULL IWASTE BOTTLE

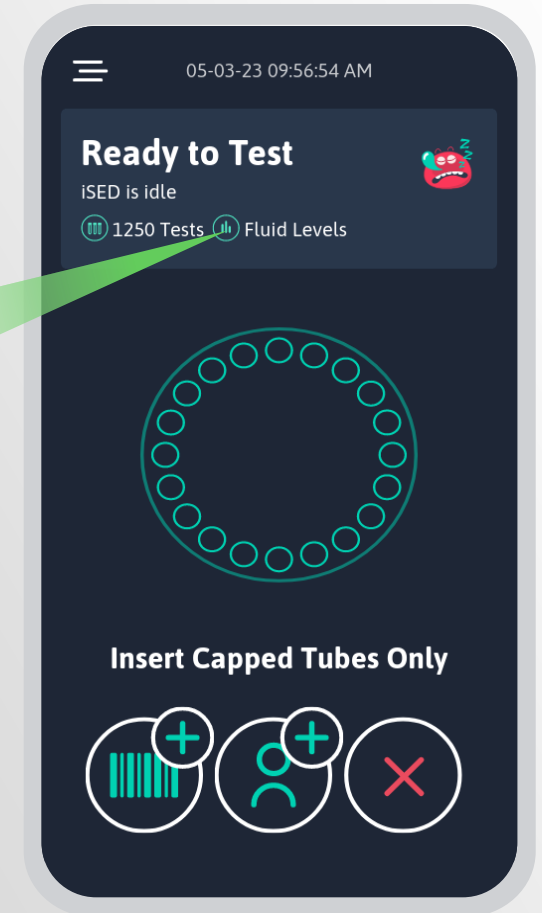
The status of the analyzer's fluid levels is visible in the status window of the Home Screen.

- If the fluid levels icon is blue-green, there are no errors in regard to bottle capacity.
- If the fluid levels icon is yellow, the iWASH® bottle is nearing empty or the iWASTE® bottle is nearing full capacity.
- If the fluid levels icon is red, the iWASH bottle is empty or the iWASTE bottle is full. The analyzer will not be able to process samples.



**WARNING:** Universal precautions should be followed. Always wear gloves to prevent exposure to pathogens. Dispose of bio-hazardous waste properly.

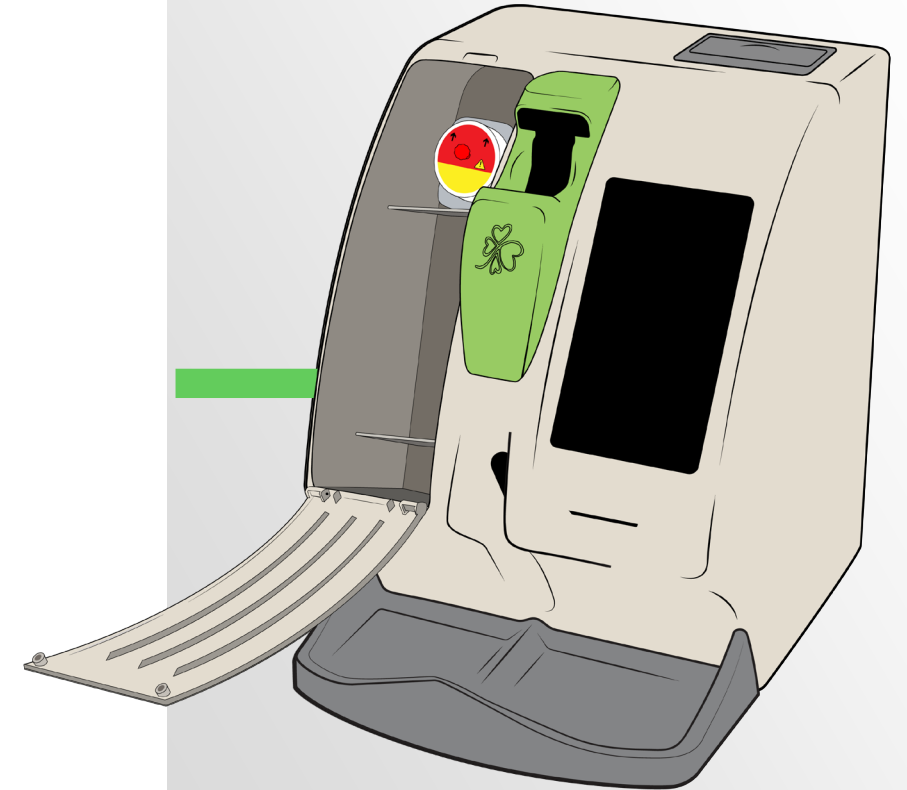
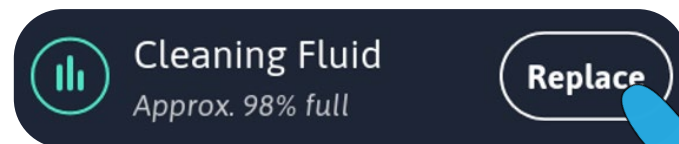
Fluid Levels



# REPLACING THE iWASH BOTTLE

## To replace the iWASH bottle:

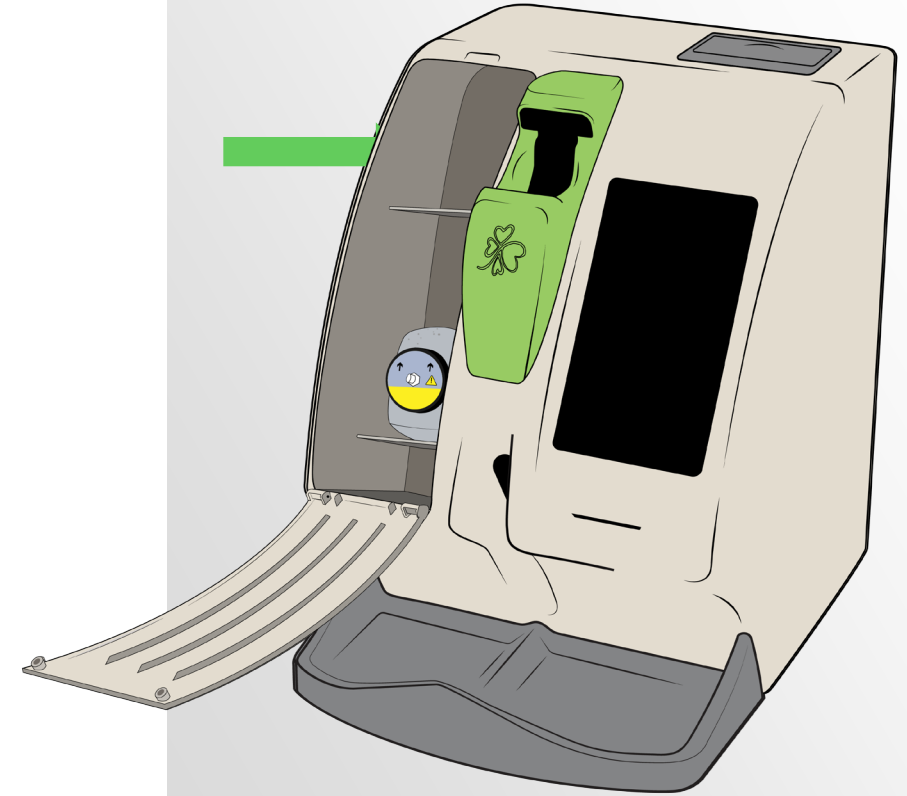
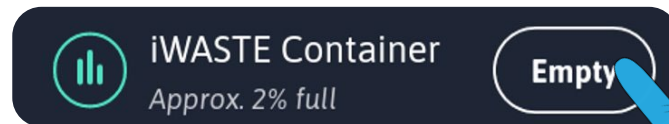
- Open the bottle compartment. The iWASH bottle is located in the lower compartment.
- Disconnect the tubing connections from the bottle cap.
- Remove the empty iWASH bottle, unscrew the cap, and save the cap in order to reuse it. **Do not discard the special wash bottle caps!**
- Replace the empty bottle with a new iWASH bottle. Use the same screw cap with the new bottle. Recap and reconnect the new iWASH bottle.
- Close the bottle compartment.
- In the Maintenance menu, press the Cleaning Fluid “Replace” button to reset counter.



# EMPTYING THE iWASTE BOTTLE

## To empty the iWASTE bottle:

- Open the bottle compartment. The iWASTE bottle is located in the upper compartment.
- Disconnect the tubing connections from the bottle cap.
- Remove the full iWASTE bottle.
- Dispose waste according to laboratory's protocol.
- Replace bottle.
- Close the bottle compartment.
- In the Maintenance menu, press the waste bottle "Empty" button to reset counter.

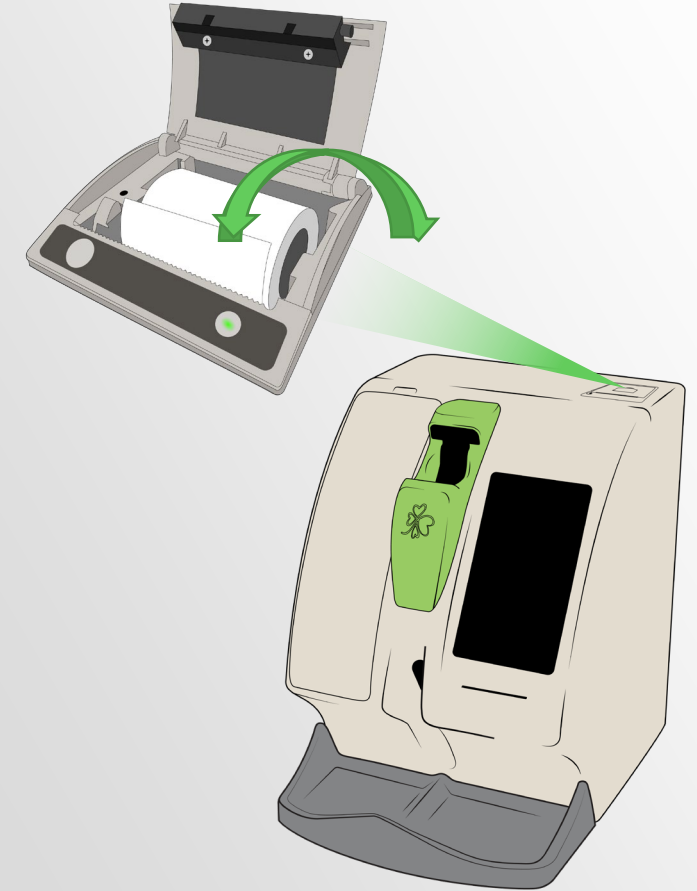


# REPLACING THE PRINTER PAPER

A green LED light on the printer will flash to indicate that the instrument is out of paper.

## To replace the printer paper:

1. Pull the lever until the lid is released from the locked position.
2. Open the paper cup lid and remove the remaining paper.
3. Insert the thermal paper roll into the printer with the paper unwinding from the bottom of the roll.
4. Reel off a few inches from a new roll of paper. Hold approximately two (2) inches of paper out of the printer as you place the new roll into the reservoir.
5. Close the lid by applying equal amounts of pressure on each side to ensure that the lid is locked.



## >130 MM/HR SAMPLES

---

Check the volume of the sample and if less than 0.5ml check for bubbles as a greater than >130 result could be attributed to a micro bubble being aspirated.

- Repeat the test.
- The patient may need to be resampled if an ESR test is necessary.

# ADDITIONAL PREVENTATIVE MAINTENANCE

---

## Tubing Change

After **200 hours** of continuous pump use, iSED will notify the user that a “Tubing Change is Required”. This message only serves as a warning and does not prevent the analyzer from operational use.

## 30,000 Test Aspirations

After **30,000 aspirations**, iSED will alarm and notify the user to contact ALCOR Scientific Technical Support. This message only serves as a warning and does not prevent the analyzer from operational use.

**Outside of the US please contact your local Distributor for Service.**

# SYSTEM STATUS, ERROR CODES, AND WARNING MESSAGES

---

Different messages display in the **status window of the Home Screen** as the system is processing specimens.

In the event of a system warning or error, an alert will appear on the instrument's screen.

**Refer to the iSED Operator's Manual for a full list of system status messages and error messages with resolutions.**

**For technical support,  
outside of the US, please  
refer to your local  
distributor.**

# THANK YOU!



ALCOR Scientific LLC  
20 Thurber Boulevard  
Smithfield, RI 02917

Technical Support  
(800) 495-5270 (USA Only)  
+1 (401) 737-3774

M-F 8:30am-5:00pm EST  
(except US holidays)  
[techservice@alcorscientific.com](mailto:techservice@alcorscientific.com)